



MUNICIPALITY OF GIMLI

A YEAR IN REVIEW

2009

STRATEGIC PLAN A YEAR IN REVIEW

MAYOR'S REPORT



STRATEGIC PLAN A YEAR IN REVIEW

- ***2009 another challenging & busy year for the Council.***
- *Council continues to take the necessary steps to bring about effective change in the Municipality. Through Council representation on numerous community committees we bring the voice of special interest groups and individual citizens to the Council table.*
- *Council has faced the additional challenges of managing climate change as we experience this wet weather cycle. Winter, spring and summer storms and their aftermath have required a large time commitment from our very dedicated Public Works, Emergency Measures and Administrative Staff.*
- *During these events staff worked around the clock to address the concerns of our property owners and to minimize the disastrous effect on the Municipality.*
- *Significant time was spent reviewing damages, submitting claims and repairing the damage to the Municipal Infrastructure which delayed or postponed work planned to be completed in 2009.*

STRATEGIC PLAN A YEAR IN REVIEW

- *Council continues to see the positive change made with the implementation of the annual rotation of the Council Members through the 4 Municipal liaison areas and the annual rotation of the Deputy Mayor which has significantly increased the knowledge base of all members of Council regarding the Municipality*
- *Council has been working diligently on the Strategic Plan, the Development Plan and Zoning By-laws . Updating and changing outdated by-laws and the development of policy.*
- *Council has maintained the structure of governance with clear portfolio assignments, monthly public committee meetings and 2 Regular Council Business Meetings monthly.*
- *Council is also represented on numerous external committees within our respective portfolios.*

STRATEGIC PLAN A YEAR IN REVIEW

Strategic Plan

- *The Strategic Plan completed in 2008 identified many community goals.*
- *Council is working to complete the Actions required to achieve these goals.*
- *In 2010 the Goals will be forwarded to the various Municipal Departments to be incorporated into their operations and long term planning.*
- *Further Departmental Goals and Actions will result from this process.*
- *In 2010 the Goals will be forwarded to the Municipal Council Committees for incorporation into their own planning processes.*

STRATEGIC PLAN A YEAR IN REVIEW

- Economic Development-Goals
- *The R.M. of Gimli will continue to support and enhance summer-oriented amenities and attractions to build upon its strength as a seasonal destination while encouraging tourism generating events and attractions in the "shoulder" and "low" seasons*

STRATEGIC PLAN A YEAR IN REVIEW

- *The R.M. of Gimli will support Its existing businesses and attract new business development through coordinated and sustained economic development efforts.*

STRATEGIC PLAN A YEAR IN REVIEW

- *Permanent residential development will be encouraged in the R.M. of Gimli to help sustain existing business while creating greater market opportunities for new business development.*

STRATEGIC PLAN A YEAR IN REVIEW

Comment:

- *The R.M. of Gimli's predominant economic strengths are its attractiveness as a tourism/recreation destination, diverse economy and levels of service, and growing population base. The community remains an appealing area to locate due to the number of available services within Gimli, its proximity to the Lake, and its proximity to Winnipeg. Although residential growth and increased seasonal tourism can help strengthen the local economy, the R.M. also requires focused coordination of economic development to support existing businesses and attract new business development.*

STRATEGIC PLAN A YEAR IN REVIEW

- Economic Development-Actions
- *Support existing businesses, manufacturing and resource-based industries, and seek to diversify economic development with the community through:*
 - *Ensuring good communication with businesses and industries.*
 - *Offering a competitive tax-base.*
 - *Offering high-quality municipal services and infrastructure.*

STRATEGIC PLAN A YEAR IN REVIEW

- Economic Development-Actions
- *Hire a professionally trained Economic Development Officer to lead and manage the R.M. of Gimli's economic developments, strategies and operations, and to:*
 - *Enhance communications with and amongst businesses, community organizations, and the three levels of government.*

STRATEGIC PLAN A YEAR IN REVIEW

- *Work with council, municipal administration, other governments, businesses, and community groups to coordinate efforts to stimulate growth, attract/retain entrepreneurs, realize economic opportunities and secure funding for the R.M. of Gimli.*
- *Identify target markets and oversee marketing/tourism strategies for the R.M. of Gimli.*
- *Attract permanent residents.*
- *Gather and track key economic planning data to develop and monitor baseline indicators of economic success.*

STRATEGIC PLAN A YEAR IN REVIEW

- *Confirm assets and investigate the condition and capacities of the Gimli Business Park (GBP) infrastructure and the GBP's current organizational direction to*
 - *Understand the infrastructure upgrades and investments required to make the GBP a more attractive area for future development.*
 - *Conduct a cost/benefit analysis of the identified upgrades and investments.*
 - *Develop a business plan to focus efforts towards attracting industries or other types of developments that can best utilize the available services and infrastructure within the GBP.*

STRATEGIC PLAN A YEAR IN REVIEW

- *Support and establish tourism-generating attractions, especially in "shoulder" and "low" seasons.*
- *Promote Gimli's high quality of life to attract residential development.*
 - *Seek at attract professionals that have flexible work environments, such as those who may work in other regions, but are able to commute from Gimli and/or work via the internet ("telecommuters") while having Gimli as their home .*

STRATEGIC PLAN A YEAR IN REVIEW

- *Encourage the revitalization of the local business association (such as a Chamber of Commerce) to lead and coordinate marketing efforts and communication amongst businesses.*

STRATEGIC PLAN A YEAR IN REVIEW

- Physical Development- Goals
- *The R.M. of Gimli will balance growth and renewal, while sustaining the quality of Gimli's natural and built environments.*

Comment: During the plan process, residents expressed concerns regarding the current state of planning for growth and change in their community. Key issues include: the lack of affordable housing; public access to the shoreline; and the quality and characteristics of developments within the Central Business District.

STRATEGIC PLAN A YEAR IN REVIEW

- Physical Development- Actions
- *Investigate and establish procedures to ensure high quality in the planning, design, and construction of new development and redevelopment and renewal of existing developments or sites.*
- *Encourage and support environmentally sensitive development.*

STRATEGIC PLAN A YEAR IN REVIEW

- *Continue revitalization and beautification efforts in Gimli's core area & the Central Business District by developing a plan and a process for design review and approval for new development, redevelopment, and renewal in the area.*
- *Merge the former R.M. and Town of Gimli zoning by-laws to develop a cohesive document to efficiently guide and regulate development in the R.M. of Gimli.*
- *Encourage and support diversity in housing options, including rental units (apartments), to accommodate lower income families, youth and seniors.*

STRATEGIC PLAN A YEAR IN REVIEW

- *Investigate and determine affordable housing needs within the R.M. of Gimli and seek means of developing affordable housing options.*
- *Support infill development and development in areas with municipal services to utilize existing infrastructure and services more efficiently.*

STRATEGIC PLAN A YEAR IN REVIEW

- *Retain and enhance public access to the Lake Winnipeg shoreline.*
- *Preserve and maintain:*
 - Heritage sites and buildings*
 - Views and access to the Lake*
 - Natural features*
 - *Open Space*

STRATEGIC PLAN A YEAR IN REVIEW

- Finance, Governance, Infrastructure and Services- Goals
- *The R.M. of Gimli will commit to:*
 - *Serving its current and future residents effectively.*
 - *Prudent financial planning and management.*
 - *Infrastructure rehabilitation and development.*
 - *Cost-effective service delivery.*
 - *Open communication.*

STRATEGIC PLAN A YEAR IN REVIEW

- *Comment:*

Serving current and future community members effectively requires: clear Council-established policies and priorities; the staffing capabilities to respond to demands in an efficient and timely manner; and mechanisms to communicate to and with all residents and visitors.

Residents have identified the state of the R.M. of Gimli infrastructure as a key issue. Beyond the completion of the wastewater treatment facility, the R.M. of Gimli has a number of other infrastructure improvements and measures to consider, such as conducting an examination of the piped wastewater collection system and the water supply and distribution system.

Encouraging planned residential growth and further commercial and light industrial development can help service debt incurred from infrastructure improvements by increasing the assessment base, but the R.M. will need to seek ways to generate revenue diversification to reduce an over-reliance on property taxation.

STRATEGIC PLAN A YEAR IN REVIEW

- Finance, Governance, Infrastructure and Services- Actions
- *Continue efforts to actively inform, and seek input and participation from the community on key issues, concerns, events and strategies through means such as:*
 - *-The website*
 - *-Open houses & Public Meetings :including conducting open houses in the Municipality and in Winnipeg*
 - *- Surveys*
 - *-Policy Development*

STRATEGIC PLAN A YEAR IN REVIEW

- *Continue efforts to foster effective communication with residents, community groups and organizations through avenues such as newsletters and the internet to ensure that the community is regularly informed*
- *Continue to maintain a well-trained and professional staff to support Council and provide excellence in services and operations.*
- *Monitor service delivery and staffing to determine if Council's priorities and residents' demands/inquiries are being met in an effective manner.*

STRATEGIC PLAN A YEAR IN REVIEW

- **Finance.**
- *Seek means of greater revenue diversification to reduce reliance on property taxes.*
- *Develop a long-range capital plan for municipal infrastructure upgrades.*
- *Formalize a management strategy of using assessment growth to fund new or improved initiatives while minimizing impact on tax rates.*
- *Continue to expand the development of reserve funds to reduce reliance on borrowing.*

STRATEGIC PLAN A YEAR IN REVIEW

- Infrastructure and Services.
- *Develop an ongoing program of service delivery efficiency studies to ensure optimal cost/benefit performance for each municipal service (e.g. road grading, garbage collection).*
- *Examine the status of the wastewater collection system to determine remedies required to reduce groundwater infiltration into the wastewater treatment facility.*

STRATEGIC PLAN A YEAR IN REVIEW

- *Conduct an assessment of the Municipal water supply and distribution system to determine the capacity and condition of the infrastructure and potential upgrades and replacement requirements.*
- *Conduct a utility rate study to determine the most cost-effective rates required for providing utility services to residents.*

STRATEGIC PLAN A YEAR IN REVIEW

- *Examine requirements and priorities for upgrading and renovation existing streets and sidewalks.*
- *Encourage and support "green" or active transportation infrastructure such as bike paths and walking trails.*
- *Establish priorities for future municipal infrastructure upgrades and expenditures.*

STRATEGIC PLAN A YEAR IN REVIEW

- Arts, Culture and Heritage- Goal
- *Building from its unique heritage, the R.M. of Gimli will strive to be the pre-eminent arts and cultural centre of rural Manitoba.*

STRATEGIC PLAN A YEAR IN REVIEW

- *Comment:*

Arts, culture and heritage play a significant role in Gimli's community life and tourism draw/potential. The R.M. of Gimli continues to celebrate its heritage while the arts and cultural community provides the R.M. with a number of unique events and attractions. The above goal reflects the ambition and passion of the arts and cultural community to increase its profile and enhance cultural events and programming in the R.M. of Gimli.

STRATEGIC PLAN A YEAR IN REVIEW

- Arts, Culture and Heritage- Actions
- *Continue to foster and strengthen relations with arts, culture and heritage groups and support initiatives to enhance arts, cultural, and heritage experiences and learning opportunities in the R.M. of Gimli.*
- *Work in conjunction with economic development initiatives to develop a communications and marketing strategy that will promote and further develop the arts, culture and heritage experiences/attractions available in the R.M. of Gimli.*

STRATEGIC PLAN A YEAR IN REVIEW

- *Support existing organizations while seeking to attract new arts, cultural, and heritage groups, initiatives, businesses, and events to the community.*
- *Encourage arts and cultural activities or events in the winter and "shoulder" seasons.*

STRATEGIC PLAN A YEAR IN REVIEW

- *Promote the R.M. of Gimli as a settlement destination for the arts community and seek opportunities to accommodate artisans.*
- *Working with local arts, culture and heritage groups, evaluate the potential of existing facilities in the R.M. of Gimli to accommodate arts, culture, heritage events/organizations.*

STRATEGIC PLAN A YEAR IN REVIEW

- Community Health, Vitality and Care-Goals
- *The R.M. of Gimli will continue to offer an outstanding quality of life characterized by inclusiveness, safety, and the delivery of exceptional community services.*

STRATEGIC PLAN A YEAR IN REVIEW

- Community Health, Vitality and Care-Actions
- *Foster and support relationships between seasonal and permanent residents and municipal government to build a strong, united community.*
- *Encourage and support participation from all residents – from youth to seniors – in community events, activities and organizations.*

STRATEGIC PLAN A YEAR IN REVIEW

- *Promote, support and celebrate volunteerism.*
- *Seek ways to engage the community in efforts to sustain safety levels in the R.M. (e.g. neighborhood watch, safety audits) and maintain effective RCMP and emergency service levels to ensure that residents' safety is not compromised with the growth of the community.*

STRATEGIC PLAN A YEAR IN REVIEW

- *Seek to address health care requirements and concerns (such as funding and staffing shortages) through regular communication with local service providers and appropriate provincial authorities.*
- *Coordinate with the school board to monitor educational service requirements and report key community indicators (such as population growth/decline).*

STRATEGIC PLAN A YEAR IN REVIEW

- *Seek opportunities to expand post-secondary or technical/trade programs within the community.*
- *Investigate the feasibility of developing a multipurpose community centre and swimming pool.*

STRATEGIC PLAN A YEAR IN REVIEW

- Environment Goals

- *The R.M. of Gimli will become a model for water and environmental stewardship.*
- *Residents have identified Lake Winnipeg, its beaches and the opportunities this tremendous asset presents as the R.M. of Gimli's greatest strength. As community members rely on this resource for their livelihoods, recreation and inspiration, it comes as no surprise that citizens feel passionate about doing their best to retain the integrity of the Lake while helping to preserve the state of the environment.*

STRATEGIC PLAN A YEAR IN REVIEW

- Environment Actions

- *Incorporate best watershed management practices in planning and development to sustain the quality of groundwater and surface water resources and the Lake environment*

STRATEGIC PLAN A YEAR IN REVIEW

- *Continue to raise local, regional, provincial, federal, and international consciousness towards Lake Winnipeg Challenges through:*
 - Working with the provincial and federal governments to enhance Lake and watershed management educational opportunities for residents and visitors.*
 - Coordinating with neighbouring and similar Manitoba municipalities in developing and incorporating watershed management solutions.*
 - Working with provincial and federal authorities to resolve Lake and watershed management issues.*

STRATEGIC PLAN A YEAR IN REVIEW

- *Support and develop opportunities for residents to become environmental stewards of the Lake, parks, trails, and conservation areas within the R.M. of Gimli.*
- *Continue to invest in improvements to waste management and treatment.*
- *Preserve and protect the Lake Winnipeg shoreline and other significant natural areas.*

STRATEGIC PLAN A YEAR IN REVIEW

- *Adopt policies, procedures and practices to make existing and future municipal buildings, services, and developments more environmentally sustainable*
- *Develop policies and sustainable development targets to guide operations and practices within the R.M. (e.g. energy efficiency, wastewater treatment, pesticide/herbicide use, recycling, waste minimization, road development and maintenance, active transportation infrastructure, water conservation)*

STRATEGIC PLAN A YEAR IN REVIEW

- What have we accomplished to date?
- Highlights

STRATEGIC PLAN A YEAR IN REVIEW

● **ACTIONS TO DATE**

- *Web Page Public Events and Notice Section being well utilized*
- *News letter published 3 times per year*
- *Basic Service Package approved and implemented by Council*
- *Reduction of Solid waste & enhanced supports to recycling program*

● **WORK IN PROGRESS**

- *Developing a Web data base and Social Media Websites*
- *Job descriptions being revised to reflect actual duties to create clarity for the public.*
- *Continue to work on long term plans for infrastructure renewal*
 - *southern extension of the sewage system*
 - *sewer and water line renewal*
 - *development of a new water treatment plant.*

STRATEGIC PLAN A YEAR IN REVIEW

● **ACTIONS TO DATE**

- *Completed a review of all Municipally owned properties to determine those properties that should be sold to generate capital infrastructure funding.*
- *Identified the properties that had an existing lease and those that required a lease with the organizations using the land or facilities.*

● **WORK IN PROGRESS**

- *Developing the leases for community organizations to allow for long term planning for the Municipality and the organizations.*
- *Establish a review process for all Municipal leases.*

STRATEGIC PLAN A YEAR IN REVIEW

● **ACTIONS TO DATE**

- *Phase 3 – connected the urban centre utility to the treatment plant completed in February 2009.*
- *Completed a review of the Master Sewage Plan to service all areas in the southern area of the municipality along the shores of Lake Winnipeg.*
- *Received funding of 6 million dollars from the infrastructure program for the southern extension of the sewer system.*

● **WORK IN PROGRESS**

- *Working with Winnipeg Beach to extend the sewer treatment system to their community.*
- *Developing proposal for a new Water Treatment Plant to service the Urban Centre and surrounding areas.*
- *Working with our neighbouring Municipalities to increase communication and to identify benefits of regional cooperation.*

STRATEGIC PLAN A YEAR IN REVIEW

● **ACTIONS TO DATE**

- *Held 3rd Annual Council Meeting in Winnipeg.*
- *Ongoing publishing of Municipal Reports on Web*
- *Electronic Agenda available on Web*
- *Held 2nd Annual Fall Meeting of all Property Owners Associations with Council*

● **WORK IN PROGRESS**

- *Council's ongoing commitment for community consultation on important issues.*
- *Fewer In Camera Discussions.*
- *Improving response times to address taxpayers concerns and creating an information accessibility and delivery processes.*

STRATEGIC PLAN A YEAR IN REVIEW

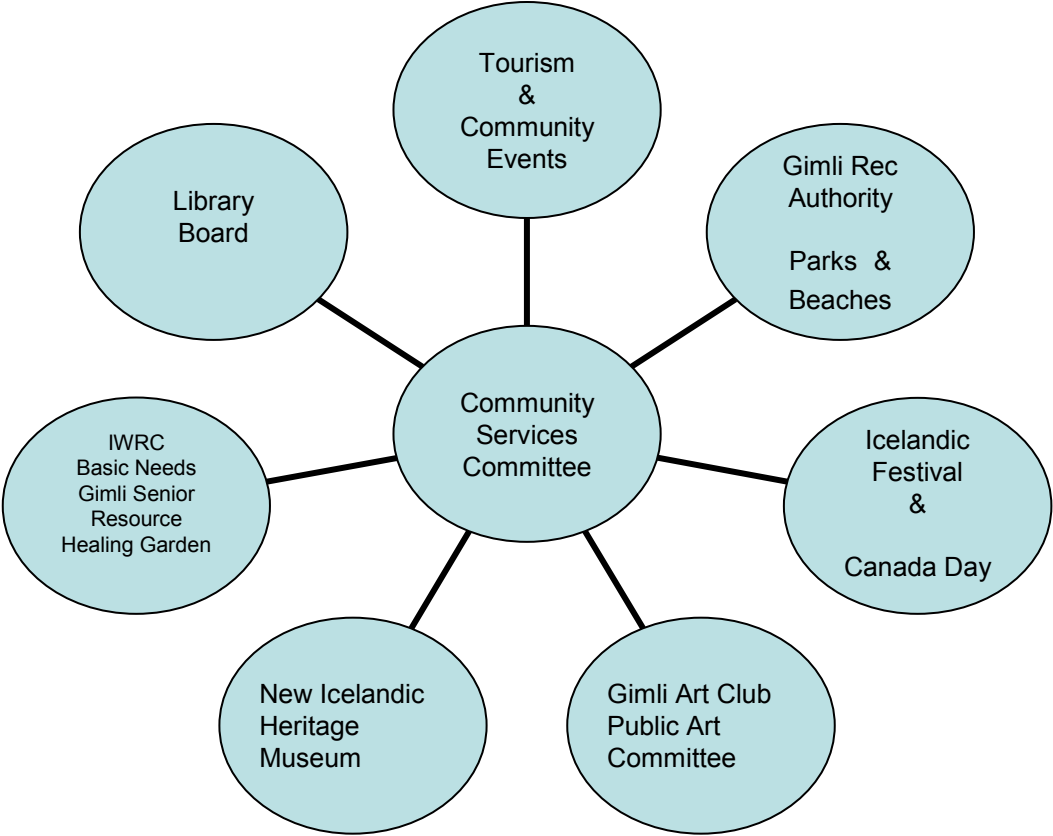
Accomplishment of Strategic Goals By
Council Portfolio

STRATEGIC PLAN A YEAR IN REVIEW

COMMUNITY SERVICES, PARKS & RECREATION PORTFOLIO



STRATEGIC PLAN A YEAR IN REVIEW



STRATEGIC PLAN A YEAR IN REVIEW

● **ACTIONS TO DATE**

- *Inventory of all parks completed.*
- *Play structure renewal program completed.*
- *Discussions held with Province of Manitoba to review and revise Beach Advisory Program.*

● **WORK IN PROGRESS**

- *Addition of Photo information to Park Inventory.*
- *Program for new play structure development, benches, tree planting and utilization of Green spaces.*
- *Reviewing participation in the Blue Flag Program.*

STRATEGIC PLAN A YEAR IN REVIEW

● **ACTIONS TO DATE**

- *Addition of Recycling containers at Gimli Beach*
- *Expanding Tourism opportunities through Promotion Campaign*

● **WORK IN PROGRESS**

- *Showers to be installed on Beach in 2010*
- *Development of the use of Social Media to promote Gimli*
- *Repairs to Viking Statue*

STRATEGIC PLAN A YEAR IN REVIEW

● **ACTIONS TO DATE**

- *Completed Engineering Review of repairs required to Viking Statue.*
- *Repair of Stage Roof at Gimli Park.*
- *Permanent repair completed to the North East Corner of Gimli Park*

● **WORK IN PROGRESS**

- *Repairs to Gimli Park Stage*
- *Upgrading of Pavilion Washrooms by April 1, 2010*
- *Cultural Capitals of Canada Application*

STRATEGIC PLAN A YEAR IN REVIEW

Additional Committee Participation

- *Gimli Garden Club- Application for Manitoba Hydro Tree Planting Grant*
- *Olympic Torch Committee- Olympic Torch Event January 6th, 2010 – Torch bearers will run through Gimli. Community activities planned.*
- *Gimli 125th Anniversary Committee –Planning of Celebration*

STRATEGIC PLAN A YEAR IN REVIEW

- ***Municipal Heritage Advisory Committee***
- *Completed Heritage Plan for Municipality*
- *Heritage Inventory-Rural Area*
- *Loni Beach Heritage Statement of Significance Project*

STRATEGIC PLAN A YEAR IN REVIEW

- ***Environmental Advisory Committee***

Lake Winnipeg Initiatives

Composting & Recycling- Approved for A WRAPP Grant for a Community Garden and Compost demonstration site. Hired a Community Gardener and developed the garden and composting program.

- ***Additional Environmental Commitments***

Environmental Stewardship- South Basin Mayors and Reeves, Ongoing support and participation in the Lake Winnipeg Consortium, Shoreline Erosion Technical Committee, East Interlake Conservation District.

STRATEGIC PLAN A YEAR IN REVIEW

Additional Committee Participation

- ***Age Friendly Community Committee***

Held an seminar/information session on Age Friendly Initiatives in fall of 2008.

Providing information to local business on being Age Friendly

Established and presented Annual Community Award for Gimli's Best Age Friendly Business

Represented Gimli and Manitoba at Canadian Conference on being Age Friendly

- ***Gimli Public Art Committee***

Overseeing the care and presentation of Gimli's Public Art Collection

Developing solutions for the proper storage of the valuable collection and a permanent location to display the art.

STRATEGIC PLAN A YEAR IN REVIEW

YOUTH VOICE

- *Youth representative on Gimli Council as selected from their peers.*
- *Have appointed youth members to the Recreation Advisory Committee and the Environmental Advisory Committee.*
- *Ongoing consultation with the Youth Community Partnership Committee*
 - *Established Gimli as a FAIR TRADE Community*

STRATEGIC PLAN- Committee

Volunteers

- *"Something that can't be underestimated is the value and the vital role that volunteer committees play in our community. These are sometimes committees that are established by council through a By-Law where there is a need for valuable community services that might not otherwise be fulfilled. In other cases there is in-kind support from council in the form of representation on committees or through the donation or long-term use of land or buildings and/or labour or assistance provided by the Public Works Department, the R.M. Administration or office staff. "*
- *"I believe that the amount of time and coordination spent supporting these committees in order to maximize their success is something that at times is overlooked by citizens and not recognized as being part of good governance decisions by council. In many cases without the commitment from volunteers willing to serve, along with varying degrees of support both in-kind and financially from the municipal government, vital community work would not get done or it would get done with a resulting increase in budget figures. "* -Mayor Tammy Axelsson

STRATEGIC PLAN A YEAR IN REVIEW

GIMLI RECREATION DEPARTMENT



STRATEGIC PLAN A YEAR IN REVIEW

● **ACTIONS TO DATE**

- *Hired a Recreation Manager to replace function of Gimli Recreation Authority Board*
- *Hired term Recreation Programmer to expand community programs*
- *Policy review completed for facility user agreements. Security requirements and rental agreements revised.*

● **WORK IN PROGRESS**

- *Facility Safety Policy review under development to meet Work Place Health & Safety Guidelines.*
- *Strategic Plan for Recreation*
- *Employee job descriptions under review*

STRATEGIC PLAN A YEAR IN REVIEW

● **ACTIONS TO DATE**

- *Budget review completed and revised pricing developed.*
- *Recreation Advisory Committee created.*
- *Multiplex Planning Committee established by local Service organizations- design and costing under committee review*

● **WORK IN PROGRESS**

- *Facility Audit and needs assessment in development.*
- *Youth connections being developed by Recreation Manager.*
- *Gimli Skate Board Park to be completed in 2010*

STRATEGIC PLAN A YEAR IN REVIEW

● **ACTIONS TO DATE**

- *Increased overall use of recreation facilities*
- *Expanded programming opportunities*
- *On going upgrades to the Fitness Centre Equipment*
- *Created a new canteen menu with "Healthy Choices"*

● **WORK IN PROGRESS**

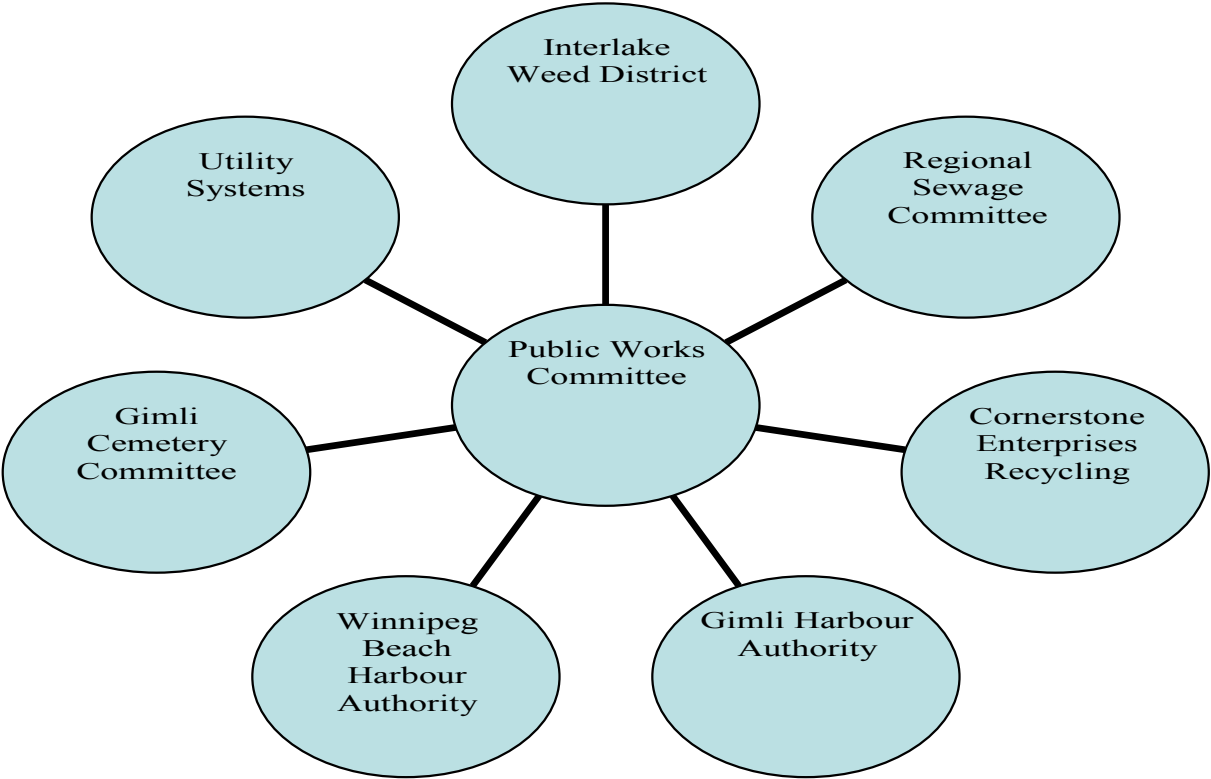
- *Development of Leadership Program to provide instructors for future community programs*
- *Develop solutions for Accessibility concerns in Recreation Centre*
- *Improvements to Sport Park*

STRATEGIC PLAN A YEAR IN REVIEW

PUBLIC WORKS PORTFOLIO



STRATEGIC PLAN A YEAR IN REVIEW



STRATEGIC PLAN A YEAR IN REVIEW

● **ACTIONS TO DATE**

- *New CET – Engineer hired.*
- *CET Students Hired for 2009*
- *Water Management Committee Actively Advising the Municipality*
- *Aerial Photograph Program & Survey Equipment Purchased*

● **WORK IN PROGRESS**

- *Additional Survey staff to be considered for 2010 to deal with significant backlog of drainage complaints.*
- *Training for Staff – Engineering Dept.*
- *Complete review of Lot Grade process and other planning issues*

STRATEGIC PLAN A YEAR IN REVIEW

● **ACTIONS TO DATE**

- *Corona Bridge replaced and survey completed*
- *Thompson Dr. ditch surveyed and cleaned out*
- *Seagram Road clean out from PTH 8 to PR 222 to be completed in 2009.*
- *North 5th Ditch- Completed-*

● **WORK IN PROGRESS**

- *Development of a comprehensive long term Drainage Plan for Municipality*
- *Ongoing review of Reserve allocations to allow for significant costs to complete capital projects*
- *Encourage development of a Provincial Program to manage provincial drainage in Interlake Region*

STRATEGIC PLAN A YEAR IN REVIEW

● ACTIONS TO DATE

- *Rails to Trails- Required culvert Installations identified and 2 additional crossings installed.*
- *Husavik -project designed and plotted. Municipality acquiring the land for the drains.*
- *Surveys completed for long list of historical drainage problems*

● WORK IN PROGRESS

- *Additional Survey staff to be considered for 2010 to deal with significant backlog of drainage complaints. & required surveys*
- *Husavik Drainage -project to be completed.*
- *Complete Survey for North Boundary Drainage – Cost sharing with Bifrost to complete the project*

STRATEGIC PLAN A YEAR IN REVIEW

● **ACTIONS TO DATE**

- *Continuation of the equipment replacement process -Purchase of Mowers & Loader*
- *Continued commitment to provide additional funds to reserves from operational surpluses to encourage good fiscal management of the department*
- *Rates for use of Municipal Equipment updated to reflect current costs*

● **WORK IN PROGRESS**

- *Develop long term equipment replacement program to maximize capital funds available*
- *Equipment inventory, storage and security management being developed-secure Public Works Yard & review expansion of shop buildings*
- *Provide grader training to department staff*

STRATEGIC PLAN A YEAR IN REVIEW

● **ACTIONS TO DATE**

- *Refuse collection systems and Solid Waste By-law implemented.*
- *Engineering work for New Cells to be developed at Waste Disposal Site completed*
- *Provided additional supports to the Recycling program*

● **WORK IN PROGRESS**

- *Develop a composting system for Municipal Compost site at Land Fill*
- *Review options for recycling collection system*
- *Complete improvements to land fill cells and construct new cells as required*

STRATEGIC PLAN A YEAR IN REVIEW

● **ACTIONS TO DATE**

- *Clerical Position created to better serve the public*
- *Sidewalk Renewal Program in Urban Centre*
- *Street lighting installations and improvements*
- *Seagram Road Redevelopment*

● **WORK IN PROGRESS**

- *Ongoing analysis and review of the costs for Airport, road maintenance, waste collection and sewage plant operations*
- *Develop required safety policy and procedures for the department.*
- *Develop an active transportation strategy with expansion of community trail system*

STRATEGIC PLAN A YEAR IN REVIEW

● **ACTIONS TO DATE**

- *Connected the Urban, Loni Beach and South Beach Utilities to the Treatment Plant.*
- *Continuing training of additional Water and Waste Water Treatment Staff*
- *Hired Level 3 Water Treatment Staff*

● **WORK IN PROGRESS**

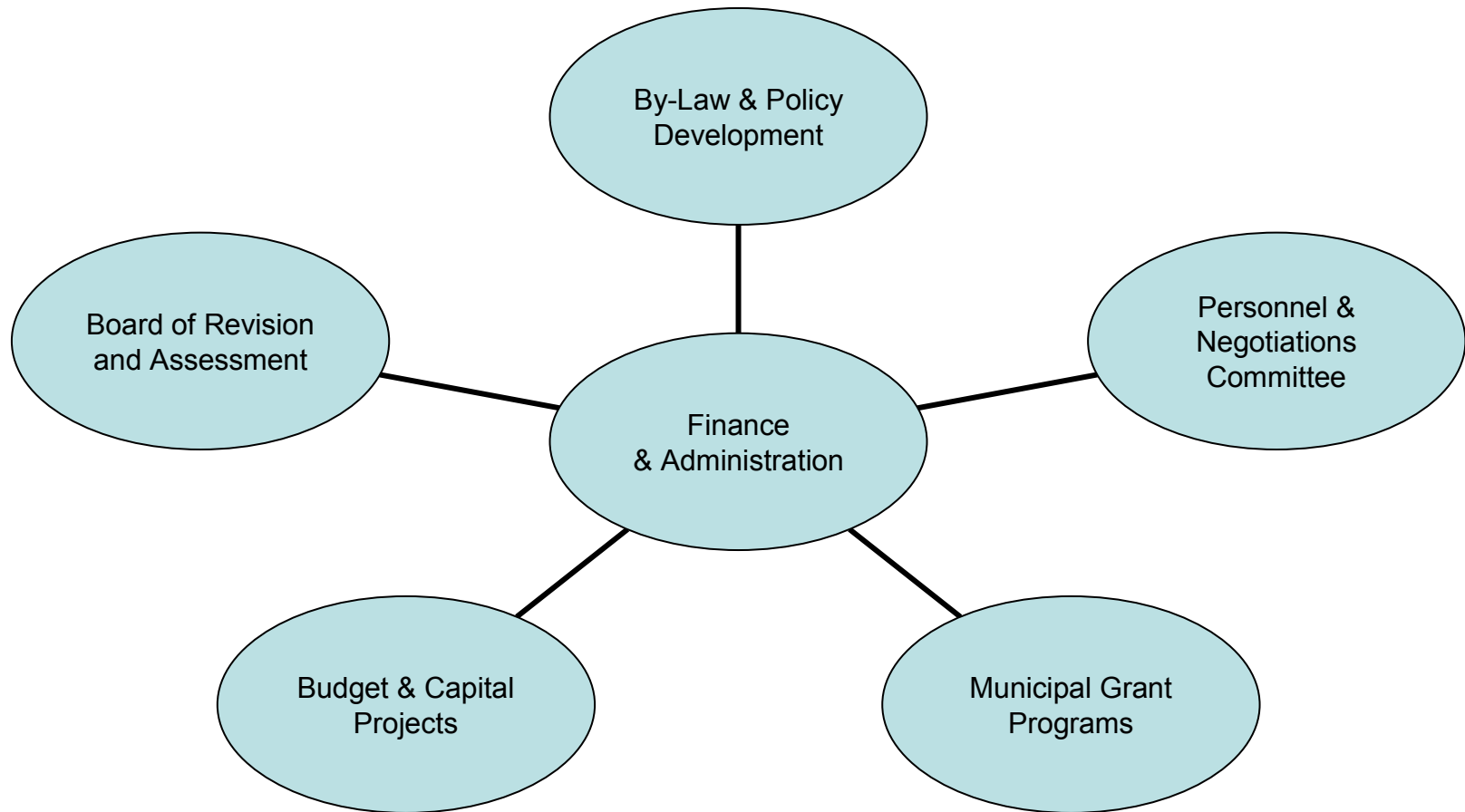
- *Review of succession plan and requirement for additional Utility staff*
- *Infiltration Study for Wastewater Collection system*
- *Develop program to remove weeping tile and downspout connections from waste water collection and treatment system.*

STRATEGIC PLAN A YEAR IN REVIEW

FINANCE & ADMINISTRATION PORTFOLIO



STRATEGIC PLAN A YEAR IN REVIEW



STRATEGIC PLAN A YEAR IN REVIEW

● **ACTIONS TO DATE**

- *Continued Council commitment to the Pre Budget consultation process to maximize Public input prior to the Financial Plan being completed.*

● **WORK IN PROGRESS**

- *Strategy Development to use our actual growth in assessment and changing of funding priorities to minimize or minimize future tax increases.*

STRATEGIC PLAN A YEAR IN REVIEW

● **ACTIONS TO DATE**

- *Use of 2008 surplus to fund Capital projects and purchases in the 2009 budget. The 2009 Capital budget had no tax impact on property owners.*
- *Commitment to utilize ongoing consistent contributions to Reserves to stabilize future budgets.*

● **WORK IN PROGRESS**

- *Continue to rebuild existing reserves through funds saved in operating budgets.*
- *Develop Strategy to ensure long term viability of Utility Systems*

STRATEGIC PLAN A YEAR IN REVIEW

● **ACTIONS TO DATE**

- *Established Basic Service levels and consumptive limits.*
- *Establish user pay rates for services requested or required over the basic services and limits provided.*
- *Increased all permits to a cost recovery level*

● **WORK IN PROGRESS**

- *Possible Services identified for further review: dust control, recycling.*
- *Developing a strategy to recover user costs and cost sharing agreements with neighbouring Municipalities*

STRATEGIC PLAN A YEAR IN REVIEW

● **ACTIONS TO DATE**

- *Discussions concerning alternative financing strategies.*
- *Actively applying for all available grant opportunities.*
- *Reducing costs through effective bulk purchasing and management of inventories*

● **WORK IN PROGRESS**

- *Seek viable options for the Municipality for capital projects exploring Public Private Partnerships, grants, infrastructure funding and Regional partnerships.*
- *Development of a User Pay Systems*
- *Development of Special Service Areas*

STRATEGIC PLAN A YEAR IN REVIEW

- **ACTIONS TO DATE**

- *Approved a Reorganization Plan for the Municipality to streamline operations and improve accessibility to people and information.*
- *Job Descriptions revised to provide clear direction to staff as well as accountability and transparency for the Public*

STRATEGIC PLAN A YEAR IN REVIEW

- **ACTIONS TO DATE**

- *Eliminated ACAO Position*
- *Created and appointed Manger of Municipal Assets & Human Resources*
- *Created and appointed Manager of Finance*
- *Revised Utility Clerk position to PT*
- *Created PW Administrative Assistant Position*

STRATEGIC PLAN A YEAR IN REVIEW

- **ACTIONS TO DATE**

- *Created a separate division for Water & Waste Water Treatment*
- *Created a separate division for Geomatics & Planning*
- *Created a PW Foreman & Works Coordinator with specific areas of responsibility to provide direction to Public Works Staff*

STRATEGIC PLAN A YEAR IN REVIEW

- **ACTIONS TO DATE**

- *Acquired the Gimli 1915 Public School Heritage Building*
- *Restructured Administrative Office Space*
- *Completed the Tangible Capital Assets Listing for all Municipal Assets as required under new PSAB Financial Reporting for Municipalities*

STRATEGIC PLAN A YEAR IN REVIEW

- **ACTIONS TO DATE**

- *Successfully negotiated new 3 year contracts for Public Works, Recreation and Finance & Administration.*
- *Completed LID and Borrowing Authority for Road Project- Pelican Beach*
- *Completed LID and Borrowing Authority for Loni Beach Sewer Project*

STRATEGIC PLAN A YEAR IN REVIEW

● ACTIONS TO DATE

- *Completed the Utility Rate Study- First Reading to By-Law November 18 th, 2009*
- *Completed a Master Water Treatment System Plan*
- *Completed an Update of the 1996 Municipal Sewage Master Plan for the southern portion of the Municipality.*
- *Completed a sewer and water main renewal plan for the urban utility*

● WORK IN PROGRESS

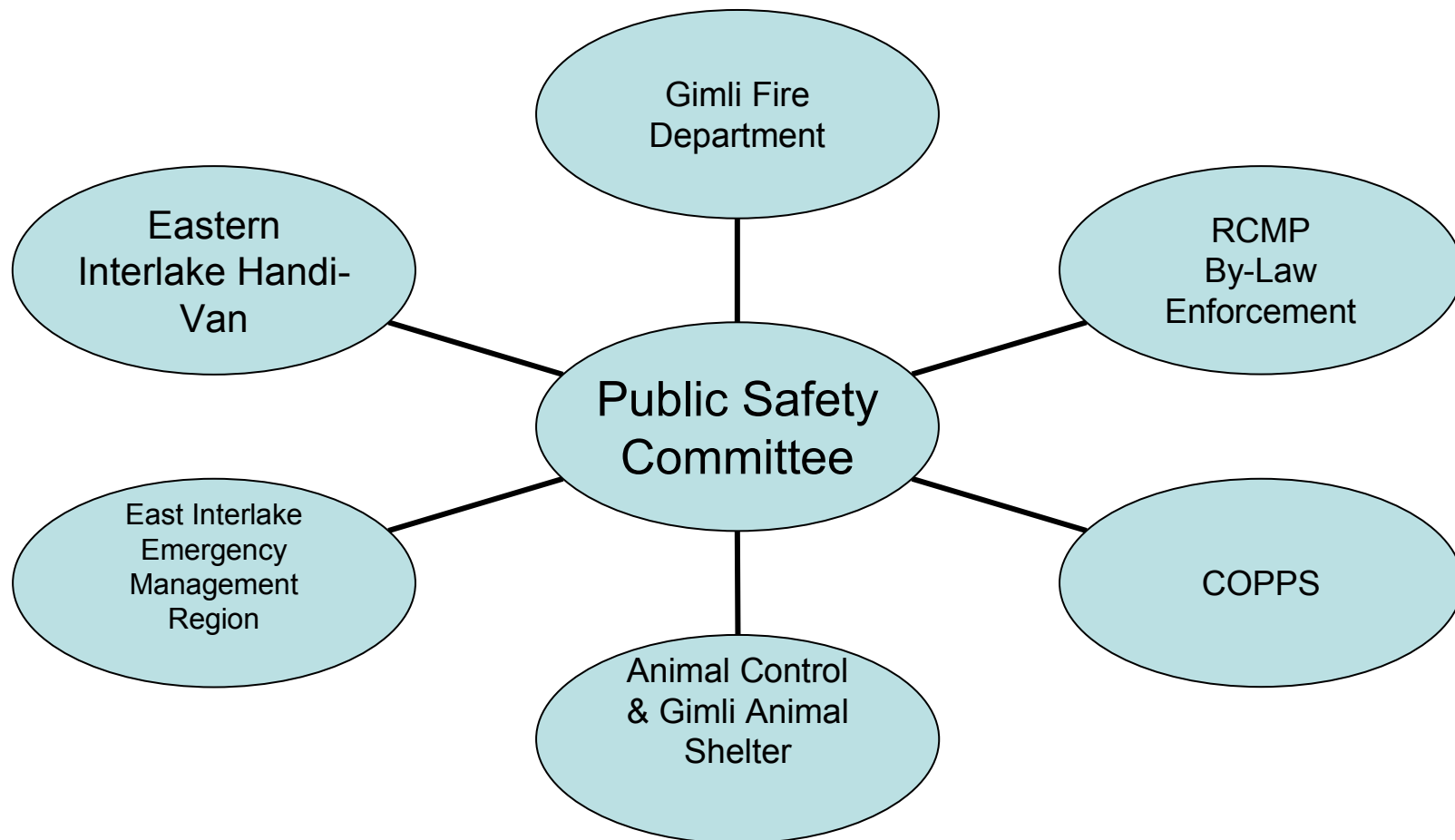
- *Implement new Utility Rate structure in 2010*
- *Develop a program for the installation of water meters*
- *Develop Local Improvement Districts for expansion of sewer systems to service the southern properties in the Municipality*
- *Implement the sewer renewal plan*

STRATEGIC PLAN A YEAR IN REVIEW

PUBLIC SAFETY PORTFOLIO



STRATEGIC PLAN A YEAR IN REVIEW



STRATEGIC PLAN A YEAR IN REVIEW

● **ACTIONS TO DATE**

- *Approved new Fire Prevention By-law & a new Fire Alarm By-Law*
- *Negotiated with Winnipeg Beach to develop a more equitable Fire Service solution for Municipality*
- *Purchased a new Fire Truck with a Jaws apparatus attached*

● **WORK IN PROGRESS**

- *Continue to explore opportunities to work with neighbouring Municipalities to develop better fire services, equipment and facilities*
- *Develop a long term volunteer fire fighter recruitment program*

STRATEGIC PLAN A YEAR IN REVIEW

● **ACTIONS TO DATE**

- *Hired EMO Co-coordinator*
- *Relocated EOC Office to basement of Gimli Public School Building.*
- *Provincial Approval received for EMO Plan for region*
- *Began Council & Staff Training*

● **WORK IN PROGRESS**

- *Completion of Volunteer Listing*
- *Complete table top Disaster Exercise to test EMO Plan.*
- *Emergency Management Operations Centre to be confirmed and set up*
- *Purchase Emergency Generator for the EOC*

STRATEGIC PLAN A YEAR IN REVIEW

● **ACTIONS TO DATE**

- *Working on Pandemic Planning*
- *Acquired a used EM Vehicle from RM of St. Andrews*
- *Completed a review of the status of the Provincial Dyking system along shoreline*

● **WORK IN PROGRESS**

- *Establish volunteer training program*
- *Develop annual response to effects of climate change-wet cycle weather and high water*
- *Work with Manitoba Hydro, Province of Manitoba on long term solution for shoreline management & high lake levels*

STRATEGIC PLAN A YEAR IN REVIEW

● ACTIONS TO DATE

- *Completed General Enforcement, Traffic By-law and Waste Management By-law*
- *Restriction of ATV use on Municipality property*
- *Finalizing the enforcement on the derelict buildings and eyesore properties.*

● WORK IN PROGRESS

- *Review and revision of Neat & Tidy, Derelict Vehicle, Noise & Nuisance By-laws,*
- *Work with ATV users to develop a program for non invasive use of the machines in the Municipality*
- *Implement Civic Addressing By-law*

STRATEGIC PLAN A YEAR IN REVIEW

● **ACTIONS TO DATE**

- *Extended term for 2nd RCMP Clerk- Keep Officers on the street.*
- *Ongoing consultation with RCMP on Public Safety issues*
- *Continued support for the COPPS program*

● **WORK IN PROGRESS**

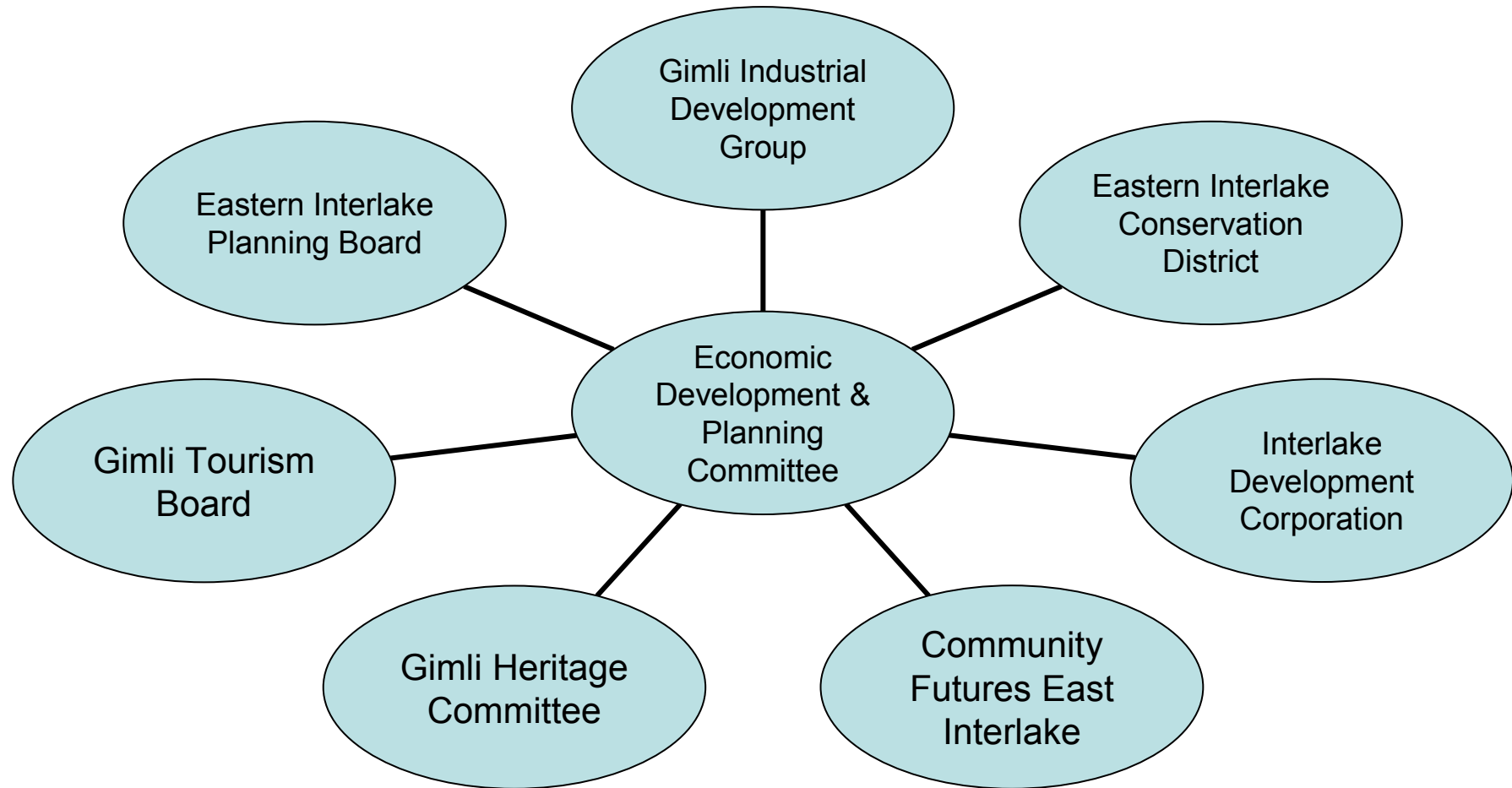
- *Review of RCMP Municipal Service Contract*
- *Reviewing security requirements and role of RCMP during community Festivals.*

STRATEGIC PLAN A YEAR IN REVIEW

ECONOMIC DEVELOPMENT AND PLANNING PORTFOLIO



STRATEGIC PLAN A YEAR IN REVIEW



STRATEGIC PLAN A YEAR IN REVIEW

● **ACTIONS TO DATE**

- *Municipal Strategic Plan Reviewed*
- *Community Marketing Campaign expanded*
- *Gimli Waterfront Harbour area surveyed and landownership confirmed.*

● **WORK IN PROGRESS**

- *Goals & Actions for Strategic plan to be rolled out to committees and departments*
- *Develop Social Media web site to market Gimli*
- *Work with Gimli Harbour Authority on long term planning for the Harbour Park area*

STRATEGIC PLAN A YEAR IN REVIEW

● **ACTIONS TO DATE**

- *Completed the Draft Development Plan- Presentation to Public on Nov 26th, 2009*
- *Continuing to work on revised zoning By-law – initial Council review is complete*

● **WORK IN PROGRESS**

- *Process for review and merging of Development Plan & Zoning By-Laws will be completed in 2009.*
- *Effective use of Shoreline Erosion Reserve /Public reserve lands being reviewed*

STRATEGIC PLAN A YEAR IN REVIEW

● **ACTIONS TO DATE**

- *Expanding on Economic Development Issues with creation of a Gimli Business Committee.*
- *Identification of expansion area for Central Business District*
- *Continuing to be successful in attracting new businesses to Gimli*

● **WORK IN PROGRESS**

- *Suspend Gimli Business Committee activities due to lack of interest*
- *Development of Policy for the management Shoreline Erosion Reserves and potential sale of unneeded Public Reserves in the Municipality.*

STRATEGIC PLAN A YEAR IN REVIEW

GIMLI BUSINESS PARK

● ACTIONS TO DATE

- *Completing the Action Plan for the GIDG Strategic Plan.*
- *Renamed the Park as Gimli Business Park- Renewed sign at Park*
- *Obtained ownership of the balance of Provincial Properties at the Business Park*

● WORK IN PROGRESS

- *Looking at Developing a CDC for Gimli*
- *Expanded the mandate of the GIDG Board to include the entire Municipality. Additional Directors to be appointed.*

STRATEGIC PLAN A YEAR IN REVIEW

● **ACTIONS TO DATE**

- *Sold 5 properties in 2009*
- *Cleaning up the Business Park with recent demolitions of derelict buildings.*
- *Ongoing projects to manage airport surface repairs*

● **WORK IN PROGRESS**

- *Negotiating a new 10 year lease for the DND Prairie Regional Gliding School*
- *Developing additional proposals for the expansion of the Prairie Regional Gliding School expansion*

STRATEGIC PLAN A YEAR IN REVIEW

● **ACTIONS TO DATE**

- *Extended existing Airport Lease to March 31, 2010*
- *Completed Engineering Study for upgrade of Airport Infrastructure*

● **WORK IN PROGRESS**

- *Working on the completion of a new lease for the Airport and revamping of the capital infrastructure*
- *Developing an Economic Development Plan for the Airport*

STRATEGIC PLAN A YEAR IN REVIEW

● **ACTIONS TO DATE**

- *Met with Minister Lemieux concerning culverts for PTH 8 Projects and installation of compatible culverts on PR 222*
- *Municipality completed a storm drain water quality study with the EICD.*
- *Appointed new citizen member to EICD for Gimli*

● **WORK IN PROGRESS**

- *Work with Province to correct highways drainage*
- *Discussions with Bifrost and Armstrong on drainage projects*
- *Feasibility Study to provide a long term location for the EICD on former lagoon site*

STRATEGIC PLAN A YEAR IN REVIEW

- **WORK IN PROGRESS**

- *EICD is developing a watershed plan for the Willow Creek Sub-Watershed which includes Gimli.*
- *Watershed Planning will be incorporated into RM of Gimli Long term drainage plan.*

STRATEGIC PLAN A YEAR IN REVIEW



STRATEGIC PLAN A YEAR IN REVIEW

Questions for clarification on the RM of Gimli a Year in Review.

Thank you for your attention.

