

ROAD 114 N.

LAKESIDE ROAD

PUBLIC ROAD  
PLAN 4176

S.S. PLAN  
25

PLAN  
1

S.S. PLAN  
19

18

17

16 20635

PLAN  
3

2

1 21110

S.S. PLAN  
13

12

11

10

9

8

7

6

5

4

3

2

1 20635

P.R. No. 222  
Plan 2274

P.L.N.

PT. SE 1/4 Sec. 32 Twp. 19, Rge. 4 E.P.M.

P.L.N.

PT. SE 1/4 Sec. 32 Twp. 19, Rge. 4 E.P.M.

P.L.N.

PT. SE 1/4 Sec. 32 Twp. 19, Rge. 4 E.P.M.

P.L.N.

PT. SE 1/4 Sec. 32 Twp. 19, Rge. 4 E.P.M.

P.L.N.

PT. SE 1/4 Sec. 32 Twp. 19, Rge. 4 E.P.M.

P.L.N.

PT. SE 1/4 Sec. 32 Twp. 19, Rge. 4 E.P.M.

P.L.N.

PT. SE 1/4 Sec. 32 Twp. 19, Rge. 4 E.P.M.

P.L.N.

PT. SE 1/4 Sec. 32 Twp. 19, Rge. 4 E.P.M.

P.L.N.

PT. SE 1/4 Sec. 32 Twp. 19, Rge. 4 E.P.M.

P.L.N.

PT. SE 1/4 Sec. 32 Twp. 19, Rge. 4 E.P.M.

P.L.N.

PT. SE 1/4 Sec. 32 Twp. 19, Rge. 4 E.P.M.

P.L.N.

PT. SE 1/4 Sec. 32 Twp. 19, Rge. 4 E.P.M.

P.L.N.

PT. SE 1/4 Sec. 32 Twp. 19, Rge. 4 E.P.M.

P.L.N.

PT. SE 1/4 Sec. 32 Twp. 19, Rge. 4 E.P.M.

P.L.N.

PT. SE 1/4 Sec. 32 Twp. 19, Rge. 4 E.P.M.

P.L.N.

PT. SE 1/4 Sec. 32 Twp. 19, Rge. 4 E.P.M.

P.L.N.

PT. SE 1/4 Sec. 32 Twp. 19, Rge. 4 E.P.M.

P.L.N.

PT. SE 1/4 Sec. 32 Twp. 19, Rge. 4 E.P.M.

P.L.N.

PT. SE 1/4 Sec. 32 Twp. 19, Rge. 4 E.P.M.

P.L.N.

PT. SE 1/4 Sec. 32 Twp. 19, Rge. 4 E.P.M.

P.L.N.

PT. SE 1/4 Sec. 32 Twp. 19, Rge. 4 E.P.M.

P.L.N.

PT. SE 1/4 Sec. 32 Twp. 19, Rge. 4 E.P.M.

P.L.N.

PT. SE 1/4 Sec. 32 Twp. 19, Rge. 4 E.P.M.

P.L.N.

PT. SE 1/4 Sec. 32 Twp. 19, Rge. 4 E.P.M.

P.L.N.

PT. SE 1/4 Sec. 32 Twp. 19, Rge. 4 E.P.M.

P.L.N.

PT. SE 1/4 Sec. 32 Twp. 19, Rge. 4 E.P.M.

P.L.N.

PT. SE 1/4 Sec. 32 Twp. 19, Rge. 4 E.P.M.

P.L.N.

PT. SE 1/4 Sec. 32 Twp. 19, Rge. 4 E.P.M.

P.L.N.

PT. SE 1/4 Sec. 32 Twp. 19, Rge. 4 E.P.M.

P.L.N.

NW 1/4 Sec. 32 Twp. 19, Rge. 4 E.P.M.

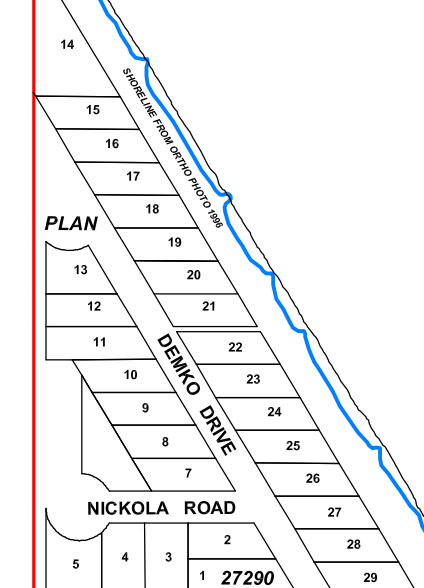
NE 1/4 Sec. 32 Twp. 19, Rge. 4 E.P.M.

32

Lake Winnipeg

SW 1/4 Sec. 32 Twp. 19, Rge. 4 E.P.M.

PT. SE 1/4 Sec. 32 Twp. 19, Rge. 4 E.P.M.



PT. NW 1/4 Sec. 28 Twp. 19, Rge. 4 E.P.M.

**Secs. 32 & 33-  
19-4E.**  
**R.M. of Gimli**  
*Map 13 of 23*

March 23, 2004  
Scale - 1" = 400'

Manitoba  
Intergovernmental Affairs and Trade  
Community Planning Services

P.T.H. No. 8